

GENCOM FOR WINDOWS



**Remote Communication Software for
Genesis Controls**



GENESIS INTERNATIONAL INC.

The GenCom Software for Windows is a unique way of monitoring and Genesis Controls remotely. The user can see the control display in real time and change the parameters as if standing in front of the Genesis control.

FEATURES:

- Remote panel simulation. I.e. Watch the control operate on a Real Time Basis.
- The user can read the control settings, download the information to a remote PC, and make changes then update the control with only the settings that have been altered.
- Graph variables such as Suction Pressure, Head Pressure, Case Temperature, etc. (Graphing feature not available on some controls.)
- User logon "Locks Out" Unauthorized personell.
- Settings can be saved to a setup file on a remote PC and uploaded to a control at any time.
- Contains context-sensitive help that provides detailed explanations of all functions.
- Connect up to 255 Genesis Controls

MINIMUM REQUIREMENTS:

- IBM PC or Compatible computer - Pentium Processor and SVGA Monitor.
- Or Serial Ethernet Connection. (Software and RJ-45 10/100M to RS485 Converter box included)

CAPABILITIES:

Examples: Following are two examples of different Genesis controls connected to GenCom.

Wizard Control



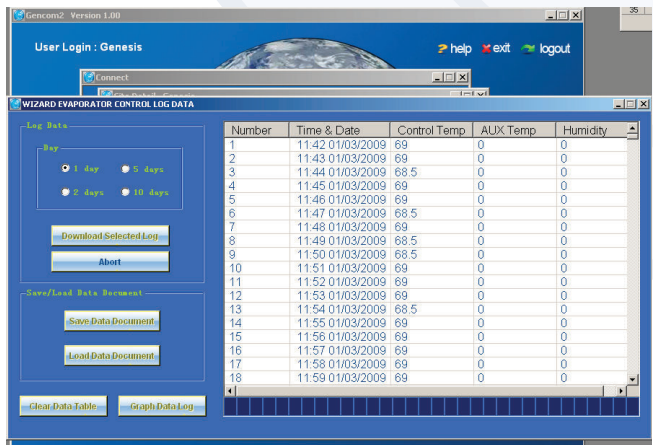
The *Wizard* family of controls are self-contained systems designed to operate defrost circuits, compressors, condensers, etc. for a commercial or industrial refrigeration systems. Depending upon Which *Wizard* you have, it can control room temperature, and monitor for refrigerant gas in a room or control suction or discharge pressure and remotely communicate through the GenCom system.



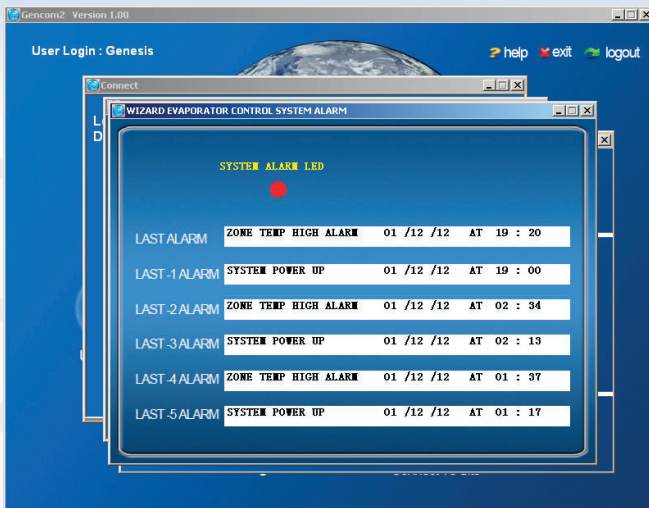
- Access the features of your Genesis control from one easy to read screen



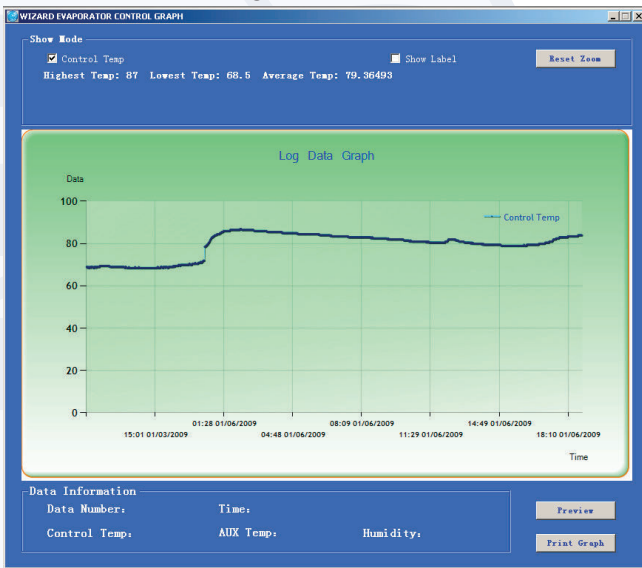
- Remote panel simulation. I.e. Watch the control operate on a Real Time Basis.
- Read, Display, Print or Change the Complete Configuration, the defrost schedule and the timing sequence.
- Activate or de-activate a defrost circuit and change the temperature set point.



- Read, Display and Print the System Data Log.



- View the Alarm Log.

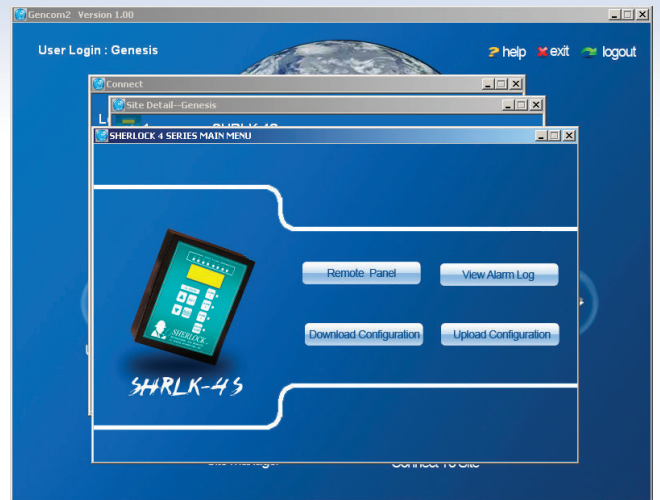


- Graph the last 4000 sampling data points.

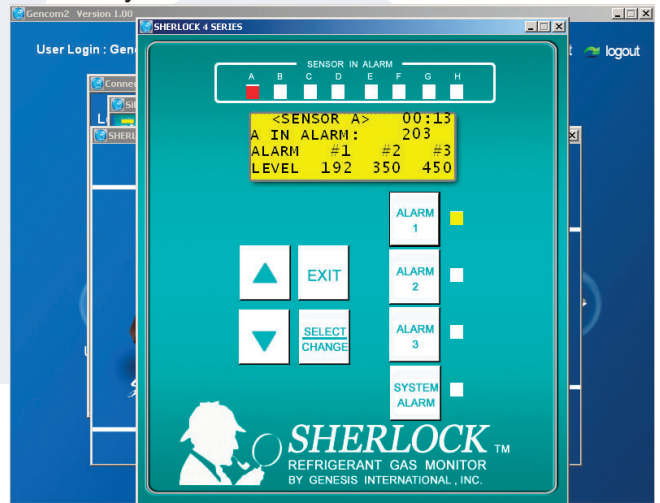
SHERLOCK 2 SERIES & 4 SERIES



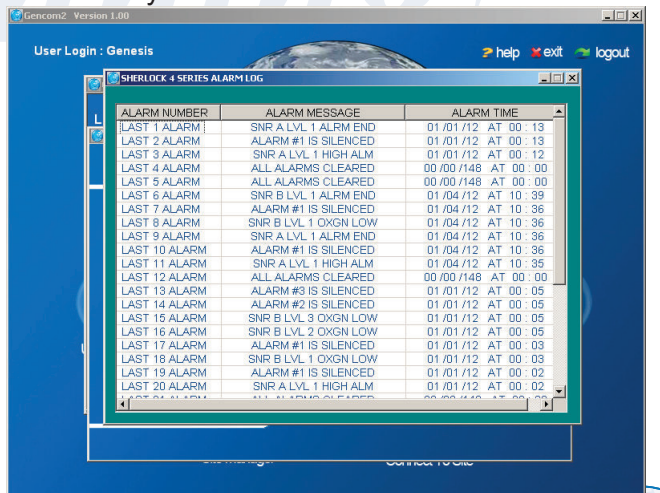
The **SHERLOCK** Control monitors for refrigerant gas leaks in mechanical rooms and enclosed buildings. **SHERLOCK** monitors for CFC, HCFC, HFC, Ammonia and other commercial refrigerants.



- Access the features of your Genesis control from one easy to read screen



- Remote panel simulation. I.e. Watch the control operate on a Real Time Basis.
- Read, Display or Change the Configuration.
- Read, Display, Change the alarm set points and delays.
- Clear any Alarm and Reset the control.



- View the Alarm Log.

The **GenCom Communications System** provides remote communications for Genesis Controls on one computer via a Ethernet to the following GENESIS products:

Wizard Parallel Rack Pressure Control	WCC
Wizard Parallel Rack Control - Plus 7	WCC-P7
Wizard Parallel Rack Control - Plus 12	WCC-P12
Wizard Parallel Rack Temp. Control	WTC
Parallel Rack Control System	EPC-2000
Wizard Single Compressor Control	WSCC
Wizard Condenser Fan Control	WCFC
Wizard Condenser VFD Fan Control	WCFC-VFD
Fibertronic Defrost Clock	DC-1000
Wizard Evaporator Defrost Control	WEC, WDC-C, WEC-H
Wizard Critical Products Control System	WCPCS, WCPCS-DUAL
Wizard Lead/Lag Cooler Control	WLL-C, W3LL-C
Light and Energy Manager	LM 16, 24, 32
HVAC Roof Top Control	RT-1000
HVAC Control	Comfort-Miser CM1-8, 16 & CM2-8, 16
Refrigerant Gas Monitoring	SHERLOCK 2-Series 402, 802
	SHERLOCK 4-Series 204, 404, 804
HUSSMANN Protocol Control	Protocol Main, Expansion, Pumping Station

For more information about the GENCOM capabilities for any of the listed Genesis products, please contact Genesis International, Inc. If your control is not listed, please contact us for confirmation. Genesis reserves the right to change specifications and pricing without notice.

Available Kits:

GenCom Communication:

For remote Computer communications with Genesis Products, comes with RS-232 / RS-485 Signal Converter Box & GenCom Communications Software.

Part #

88-0190

GenCom Communication With Ethernet Connection (10/100M):

For remote Computer communications with Genesis Products, comes with RJ-45 Ethernet 10/100M / RS-485 Signal Converter Box and GenCom Communications Software. The Ethernet Connection will auto select 10BaseT or 100BaseTX.

88-0541



GENESIS INTERNATIONAL INC.

1040 Fox Chase Industrial Dr. Arnold, MO 63010
Tel: 636-282-0011

Fax: 636-282-2722

Web: www.Genesis-International.com
E-Mail: Mail@Genesis-International.com

GENCOM 05-02-10