



GENESIS INTERNATIONAL, INC.

SHERLOCK

HIGH PRESSURE VENTLINE SENSOR



**HIGH PRESSURE VENTLINE SENSOR KIT
GENESIS PART NUMBER 60-0076**

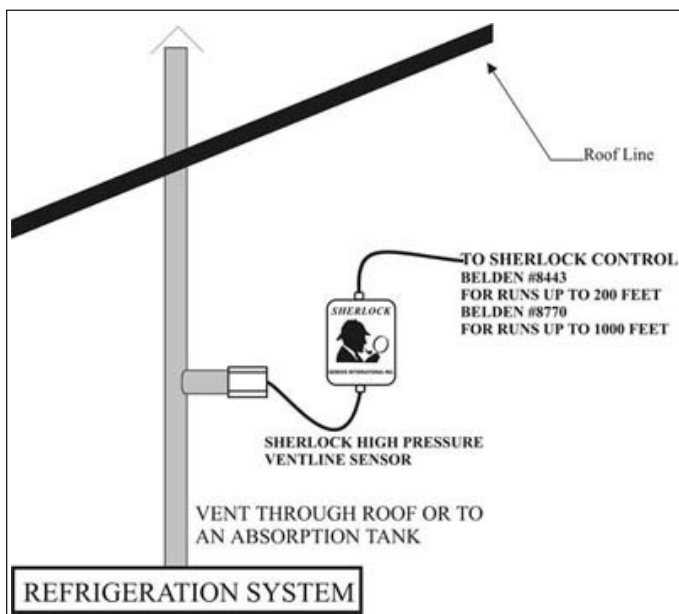
OVERVIEW

The **SHERLOCK** High Pressure Ventline Refrigerant Gas Sensor was designed to detect the presence of high concentrations of refrigerant gas in the vent lines of refrigeration systems. The sensor warns the user to investigate for possible leaks in relief valve or to check the systems for overpressure. The sensor is designed to be installed in refrigeration vent lines and is supplied in a NEMA 3R rated housing with a 1 1/4" NPT female connection. The Ventline Sensor can be utilized as a signal source for the **SHERLOCK** 2-Series or 4-Series Refrigerant Gas Monitoring Systems or the *Wizard* Evaporator Control System. There is an optional 4-20mA for EMS applications also available.

DIMENSIONS Inches (mm)

ENCLOSURE	NEMA 3R 6.5 x 4.5 x 5.0 (165 x 114 x 127)
SENSOR HEAD	Nickel Plate 4.0 x 2.0 x 2.25 (102 x 51 x 57) Sensor Opening: 1.25 (31.75) NPT Female Connection
CABLE	36 (914) Belden #8443 3-22 AWG Twisted

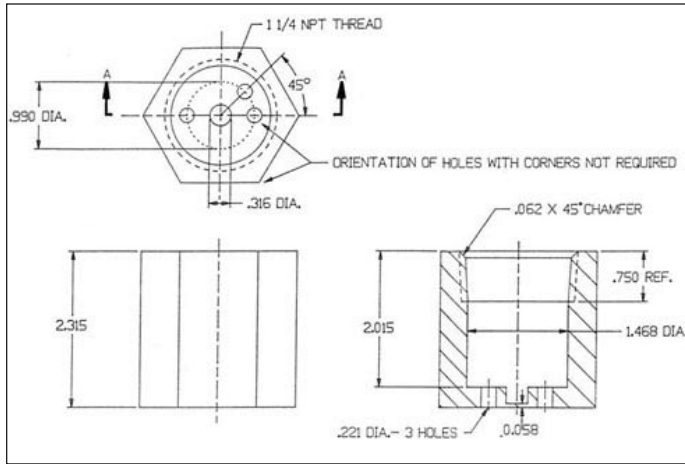
TYPICAL INSTALLATION



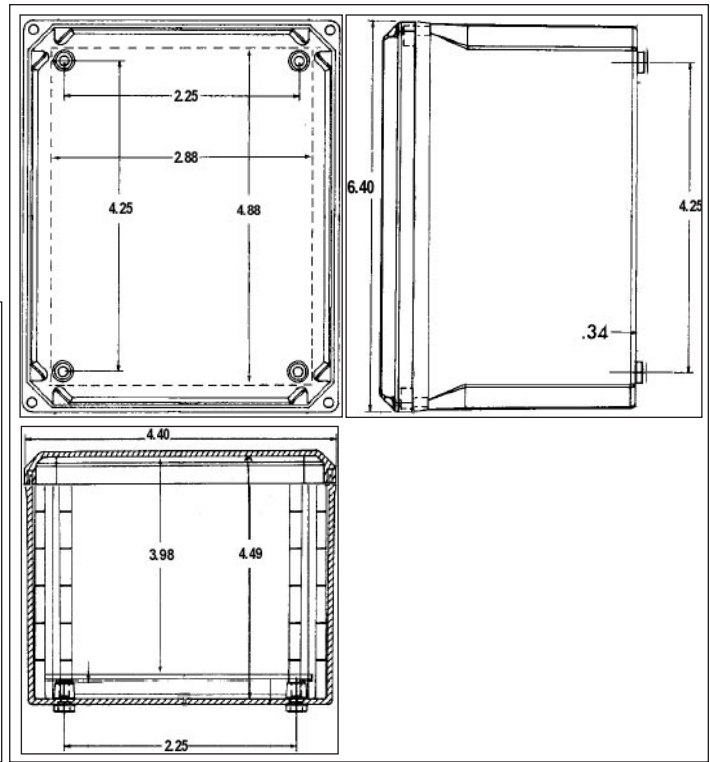
ENVIRONMENT	-25 to 120 °F (-30 to 50 °C), 0 to 95 % RH non condensing
POWER INPUT	12VDC, 250 mAmps
OUTPUT SIGNAL	0.5 to 5VDC (Sherlock)
DETECTION RANGE	30 to 300 ppm (gas dependent)
SENSITIVITY	10 % of full scale reading.
MAX. PRESSURE	300 psi
CALIBRATION	Every 6 Months
WARM-UP TIME	Readings will stabilize after 3 hours.

VENT-LINE SENSOR INDIVIDUAL COMPONENT DIMENSIONS

NOTE: Sensor element located in sensor head is replaceable. Remove old element with needlenose and line up prongs of new sensor and insert. minimize touching of element screen.

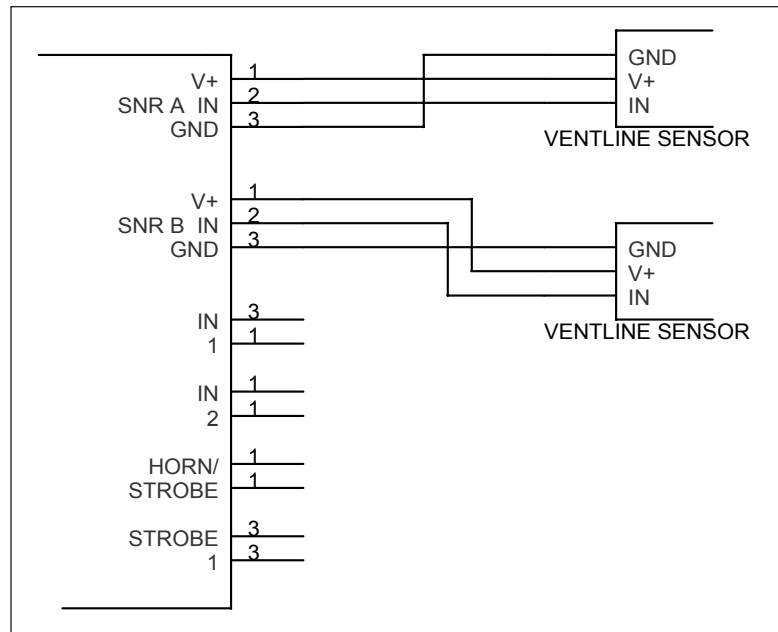


SENSOR HEAD



ENCLOSURE

TYPICAL WIRING DIAGRAM



GENESIS INTERNATIONAL, INC.

1040 FOX CHASE INDUSTRIAL DRIVE
ARNOLD, MISSOURI 63010

PHONE: (636) 282-0011
FAX: (636) 282-2722

WEBSITE:
WWW.GENESIS-INTERNATIONAL.COM

EMAIL:
MAIL@GENESIS-INTERNATIONAL.COM