



GENESIS INTERNATIONAL, INC.

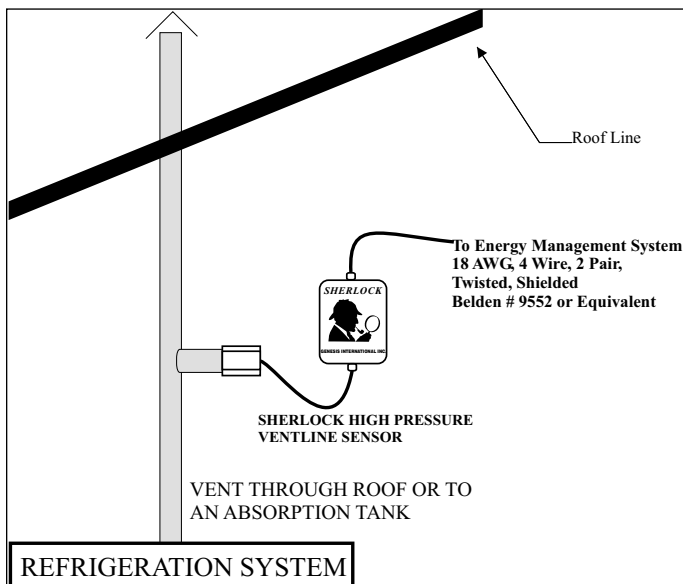
SHERLOCK

HIGH PRESSURE VENTLINE SENSOR FOR EMS APPLICATIONS



**STAND-ALONE HIGH PRESSURE VENTLINE
SENSOR GENESIS PART NUMBER 60-0149**

TYPICAL INSTALLATION



**WARNING: FOR 24 VAC POWER,
DO NOT SHARE TRANSFORMER.
DOING SO WILL CAUSE PERMA-
NENT DAMAGE TO THE UNIT.**

OVERVIEW

SHERLOCK HIGH PRESSURE VENTLINE REFRIGERANT GAS SENSOR was designed to detect the presence of high concentrations of refrigerant gas in the vent lines of refrigeration systems. The sensor warns the user to investigate for possible leaks in relief valve or to check the systems for overpressure. The sensor is designed to be installed in refrigeration vent lines and is supplied in a NEMA 3R rated housing with a 1 1/4" NPT female connection. The Ventline Sensor can be utilized as a signal source for a 4-20 mA EMS application. Other models available for connection to the **SHERLOCK 2-Series** or **SHERLOCK 4-Series** REFRIGERANT GAS MONITORING SYSTEMS or the Wizard Evaporator Control System.

DIMENSIONS Inches (mm)

ENCLOSURE	NEMA 3R 6.5 x 4.5 x 5.0 (165 x 114 x 127)
SENSOR HEAD	Nickel Plate 4.0 x 2.0 x 2.25 (102 x 51 x 57) Sensor Opening: 1.25 (31.75) NPT Female Connection
CABLE	36 (914) Belden #8443 3-22 AWG Twisted

ENVIRONMENT -25 to 120 °F (-30 to 50 °C),
0 to 95 % RH non condensing

POWER INPUT 24V AC/DC, 250 mAmps

OUTPUT SIGNAL 4-20mA Standalone
Optional Voltage Output

DETECTION RANGE 30 to 300 ppm(gas dependent)

SENSITIVITY 10 % of full scale reading.

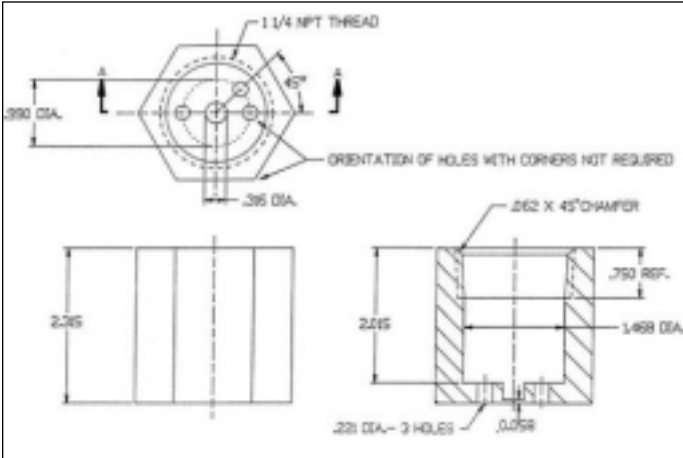
MAX. PRESSURE 300 psi

CALIBRATION Every 6 Months

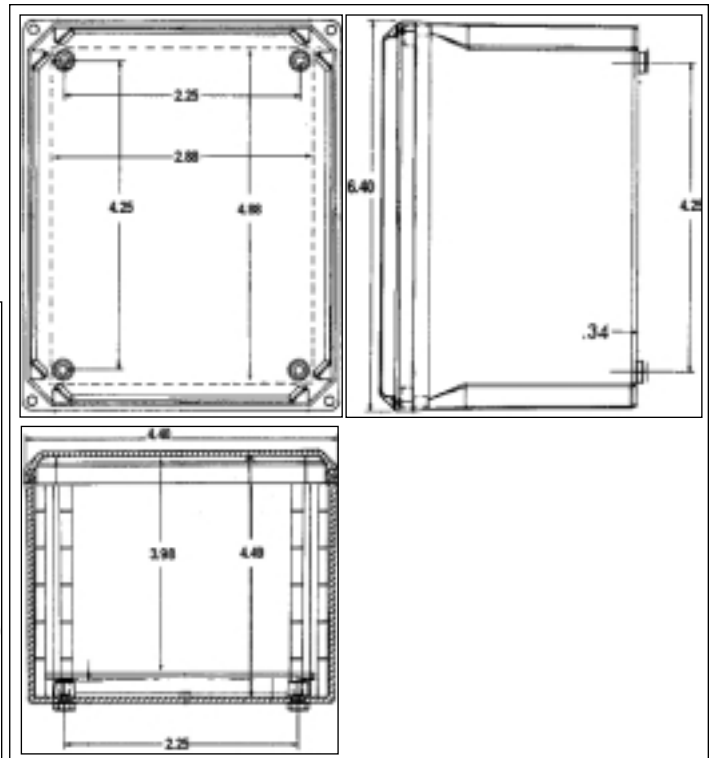
WARM-UP TIME Readings will stabilize after
3 hours.

VENT-LINE SENSOR INDIVIDUAL COMPONENT DIMENSIONS

NOTE: Sensor element located in sensor head is replaceable. Remove old element with needlenose and line up prongs of new sensor and insert. minimize touching of element screen.

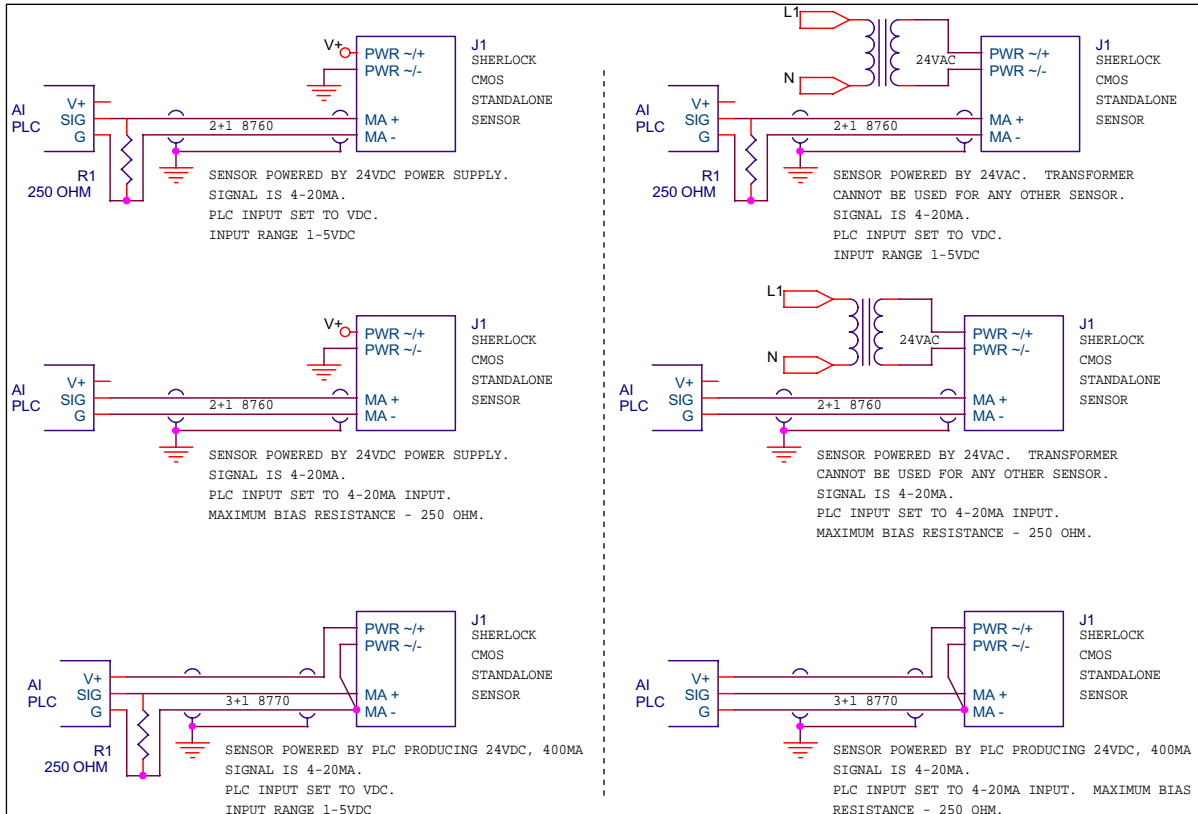


SENSOR HEAD



ENCLOSURE

TYPICAL WIRING DIAGRAM



GENESIS INTERNATIONAL, INC.

1040 FOX CHASE INDUSTRIAL DRIVE
ARNOLD, MISSOURI 63010

PHONE: (636) 282-0011
FAX: (636) 282-2722

WEBSITE:
WWW.GENESIS-INTERNATIONAL.COM

EMAIL:
MAIL@GENESIS-INTERNATIONAL.COM